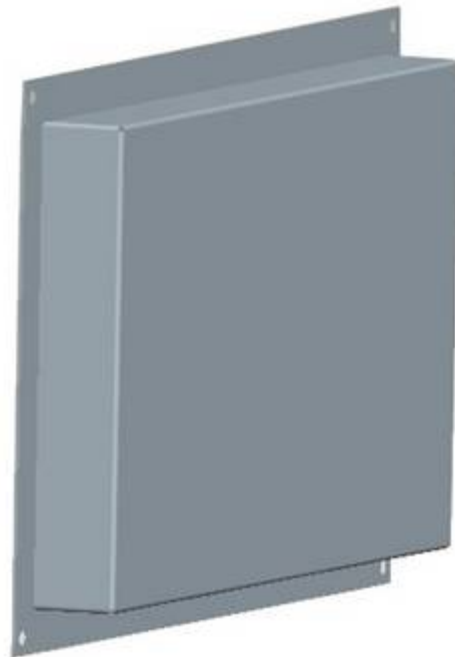
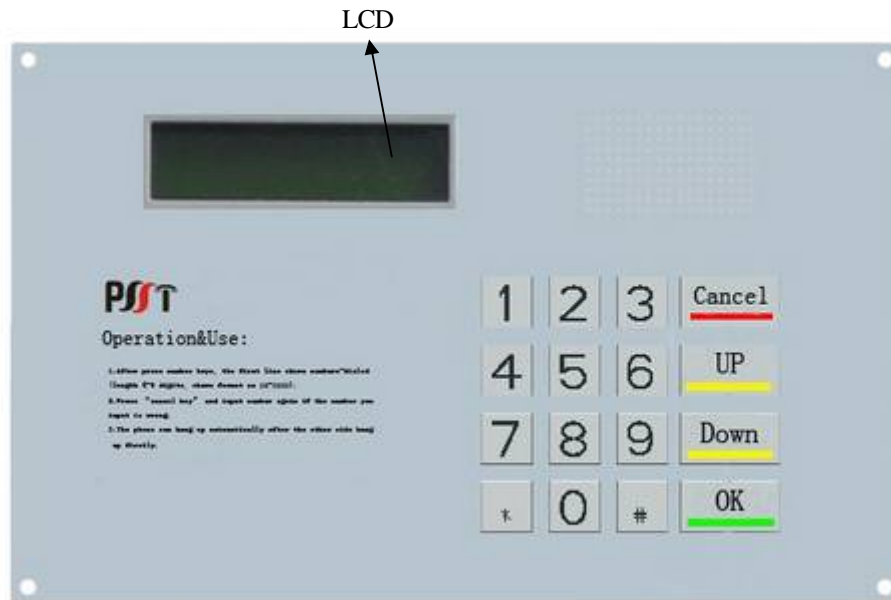


# Telephone Entry System VCP

Model No.: ESP-RDP01



## Introduction:

The unit is compatible to the Public Telephone Exchange and PABX system. With the robust construction, the unit can withstand adverse weather condition and is vandalized proof. It is mainly used for voice communication in open environment and public communication network.

## Main features:

1. The enclosure is made of SUS 304 Stainless Steel. The Keypad, microphone, speaker, LCD are IP54 waterproof graded.
2. The enclosure allows recess mounting.
3. The LCD consists of two display lines, the second line displays rolling letters (max 80 digits) when in standby with the first line blank.
4. Upon entering block and unit number, the top line shows the numbers-entered (length 4-6 digits, shows format as xx-xxxx). The second line shows “connecting.....”
5. Press “cancel key” and input number again for wrong number entered.
6. The communication terminates automatically after the resident side has hung up.
7. The unit has four relay switch, two N.O. (normally open) and two N.C. (normal close). After the call is established, the unit’s relays can be triggered by the resident handset by either pressing the “\*” or “#” respectively.

## Main specifications:

Items	Indexes
Working environment	-25°C ~ 55°C
Relative humidity	10%-95%
Current	15mA-90mA
DC impedance	< 500 Ω
Isolation impedance	> 50M Ω
Nonlinearity distortion	< 5%
Voltage of anti-thunderstrike	>4000V
Keypad lifetime	>5 million times
MTBF	>30000 hours
Power way	Line power ≥ 16 mA+12V DC
Working DC impedance	≤ 500 Ω
Exchange system	24-60V Telephone Exchange System
Dial mode	DTMF
Busy tone	450HZ 350ms on , 350ms off (adjustable)